

# Oceanic

## DECORATIVE SURFACE SERIES

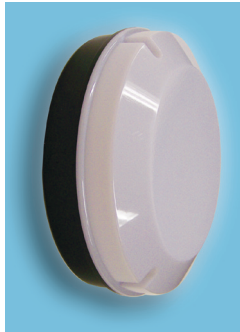
Indoor/Outdoor; Ceiling/Wall Family—WET LOCATION  
 Non-Corrosive Vandal Resistant  
 Wall or Ceiling Low Profile Fluorescent Drum Fixture

We reserve the right to revise the design or components of any product without notice.

CATALOG #		TYPE
PROJECT/LOCATION		
APPROVED BY		



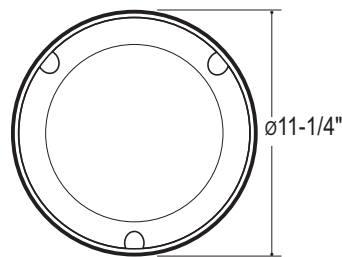
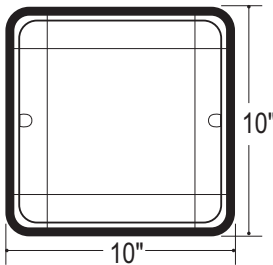
Oceanic Square



Oceanic Round



Oceanic with Clear Prismatic Polycarbonate (CPR) lens option



LAMP TYPE/QTY/WATTAGE <sup>1</sup>			
Fixture		Oceanic Square	Oceanic Round
Dimensions - Diameter x Deep		10" x 10" x 3/4"	11 1/4" dia. x 3"
Compact Fluorescent Double Twin Tube	DTT	(1 or 2)13/18/26w	(1 or 2)13/18w; (1)26w
Compact Fluorescent Triple Twin Tube	TTT	(1)26/32w	(1)26/32w
Light Emitting Diode	LED	20w	20w



Oceanic with Custom Riviera Shield Option (RV): shown with Riviera "Twilight"

### ORDERING GUIDE:

SERIES	SHAPE	LAMP/QTY/WATT	COLOR TEMP	VOLTAGE/PWR FACTOR	FINISH	OPTIONS
--------	-------	---------------	------------	--------------------	--------	---------

#### NOTES:

- Consult Factory with requests regarding lamp sources, wattages or voltages not shown.
- Consult Factory for additional Emergency Battery options not shown.

**SERIES**  
 OC = Oceanic Drum Series

**SHAPE**  
 S = Square 10"  
 R = Round 11 1/4" Diameter

**LAMP TYPE/LAMP QUANTITY/WATTAGE**  
 Refer to Above Chart

**LED COLOR TEMP**  
 3K = 3000 K range  
 4K = 4000 K range  
 5K = 5000 K range

**VOLTAGE**  
 120 = 120 Volts  
 277 = 277 Volts  
 347 = 347 Volts (Consult Factory)  
 EBU = Universal Voltage (120-277v) Programmable Start Electronic Ballast

**FINISH**  
 BK = Black Finish  
 WH = White Finish Standard

**OPTIONS**  
 9002 = Tamperproof Screwdriver  
 9206 = Integral Photocell 120v  
 9221 = Integral Photocell 277v  
 CPR = Clear Prismatic Polycarbonate  
 FUS = Single GLR Fuse an Fuse Holder  
 DFUS = Double Fusing and Holder  
 DIM = Dimming Ballast  
 MSI = Motion Sensor Integral for LED  
 RV = Riviera Shield — Custom Design Fascia — design your own (May require lower wattage)

**EMERGENCY OPTIONS<sup>2</sup>**  
 REL2 = Remote Emergency Battery TTT; 1-2 Lamp; 650 Lumens  
 REL61 = Remote Emergency Battery: LED 12W, approx. 720 Lumens (by Iota)

# PHOTOMETRIC DATA:

# OCEANIC Series

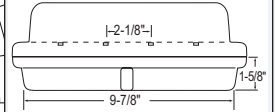
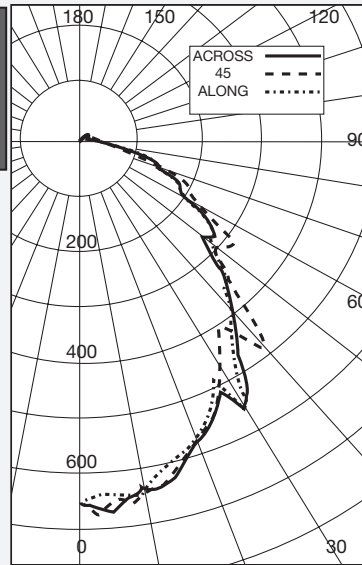
ITL test # 22952 NAC-S-LED30-90LPW-47K  
ceiling mount, prismatic plastic drop lens

Test Date: 10/11/07

		Coefficients of Utilization								
PCC>		90%			70%			50%		
Room Cavity Ratio	PW>	70%	50%	30%	70%	50%	30%	50%	30%	
	0	121	121	121	115	115	115	109	109	
	1	112	107	103	106	102	98	97	94	
	2	102	95	88	97	90	84	86	81	
	3	94	84	76	89	80	73	77	71	
	4	87	75	66	82	72	65	69	63	
	5	81	67	59	76	65	57	62	55	
	6	74	61	52	70	58	50	56	49	
	7	68	54	46	65	53	45	51	43	
	8	63	50	40	60	48	40	46	39	
	9	59	45	35	56	44	36	42	35	
10	55	41	31	52	40	33	39	32		

Rm. Percentage = 20%; PCC = Ceiling Reflectance;  
PW = Wall Reflectance

Zunal Lumen Summary			
Zone	Lumens	%Lamp	%Luminaire
0-30	478	28.48	28.48
0-40	766	45.58	45.58
0-60	1280	76.18	76.18
0-90	1615	96.08	96.08
40-90	849	50.50	50.50
60-90	334	19.90	19.90
90-180	65	3.92	3.92
0-180	1681	100.00	100.00



ITL test # 22953 NAC-S-LED30-90LPW-47K  
wall mount, white plastic drop lens

Test Date: 10/11/07

		Coefficients of Utilization								
PCC>		90%			70%			50%		
Room Cavity Ratio	PW>	70%	50%	30%	70%	50%	30%	50%	30%	
	0	116	116	116	99	99	99	83	83	
	1	101	94	87	85	79	74	66	62	
	2	90	79	70	75	66	59	55	49	
	3	81	68	57	67	57	49	46	40	
	4	73	59	48	61	50	41	40	34	
	5	67	51	41	55	43	35	35	29	
	6	61	45	35	50	38	30	31	24	
	7	56	40	30	46	34	26	28	21	
	8	51	36	27	43	30	22	25	18	
	9	47	33	23	39	27	20	22	16	
10	44	29	20	37	25	17	20	14		

Rm. Percentage = 20%; PCC = Ceiling Reflectance;  
PW = Wall Reflectance

Zunal Lumen Summary			
Zone	Lumens	%Lamp	%Luminaire
0-30	36	3.66	3.66
0-40	76	7.60	7.60
0-60	206	20.66	20.66
0-90	494	49.44	49.44
40-90	418	41.84	41.84
60-90	287	28.78	28.78
90-180	505	50.56	50.56
0-180	1000	100.00	100.00

