

Sonic

Indoor Drum Fixture with Solid Shield Trim Ceiling or Wall Family—Damp Location

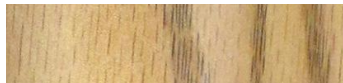


We reserve the right to revise the design or components of any product without notice.

CATALOG #		TYPE
PROJECT/LOCATION		
APPROVED BY		

SPECIFICATIONS

- DRIVER — Universal Voltage 120/277v Electronic Driver is standard for LED.
- DIFFUSER — Opal Acrylic Standard. Optional Polycarbonate.
- DECORATIVE TRIM — Heavy Gauge Aluminum with Solid Shield Trim.
- EMERGENCY — LED — Remote Emergency Battery.
- FINISH — Heavy Gauge Aluminum Trim. White Polyurethane Powder Coated Finish is Standard. Additional custom patterned Gravura Graphic Finishes available.
- HARDWARE INCLUDED — (1) J Boxstrap, (1) Nipple, (1) Cap Nut.
- LIGHT ENGINE — Energy Efficient Light Emitting Diode (LED).
- MOUNTING — Center Access Hole For Mounting To A “J” Box.
- PAN — White Polyurethane Finished Aluminum—Solid Shield Style A is Standard.
- SCREWS — Brass Thumb Screw.
- COMPLIANCE — Built to comply with U.S. and Canadian safety standards. Suitable for damp locations.

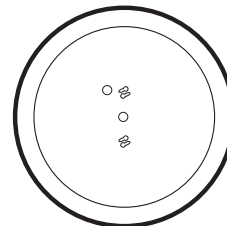
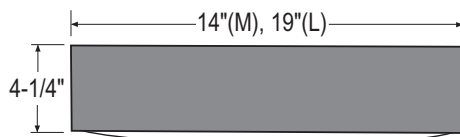


Light Oak Wood (LOW) Finish



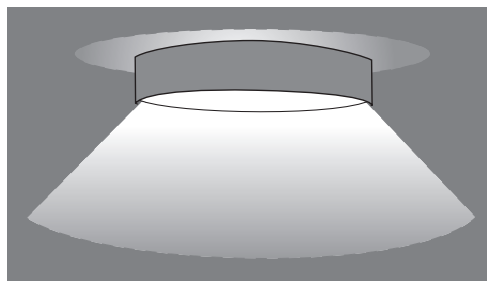
Dusty Walnut (DWT) Finish

DIMENSIONS

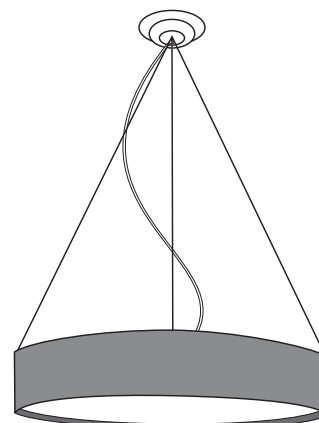


MOUNTING DIMENSIONS

OPTIONS




Sonic Light Distribution



Sonic Pendant Mount
with Optional Aircraft Cable

Sonic

Indoor Drum Fixture with Solid Shield Trim Ceiling or Wall Family—Damp Location

LAMP TYPE/QTY/WATTAGE ¹		
Visit www.eclipselightinginc.com for available IES files		
Fixture	Sonic Medium Drum	Sonic Large Drum
Dimensions - Diameter x Deep	14" dia. x 4 1/4"	19" dia. x 4 1/4"
Light Emitting Diode 	LED 25w	30w ²
<i>(values are based on nominal system Watts)</i>		
*Consult Factory for CFL Lamping		

ORDERING GUIDE:

Series	Lamp/Wattage	Color Temp	Voltage	Finish	Options
<input type="text"/>	<input type="text"/>	<input type="text"/>	<input type="text"/>	<input type="text"/>	<input type="text"/>

SERIES

SC-M-A = Sonic Medium Drum (14") Solid Shield
SC-L-A = Sonic Large Drum (19") Solid Shield

LAMP TYPE/QUANTITY/WATTAGE

Refer to Above Chart

LED COLOR TEMPERATURE

3K = ±3000K range
4K = ±4000K range
5K = ±5000K range

VOLTAGE

347 = 347 Volts (Consult Factory)
EBU = Universal Voltage (120-277V) Electronic Driver
2EBU = Two 120/277V Electronic Drivers

FINISH

BK = Black Finish
BZ = Bronze Finish
CC = Custom Color Finish
PNA = Painted Natural Aluminum
WH = White Finish STANDARD
***Additional Gravura Graphic Finishes on 3rd Page**

OPTIONS

9002 = Tamperproof Screwdriver
CR = Custom Requirements (Consult Factory)—50 pc min.
FUS = Single GLR Fuse and Fuse Holder
DFUS = Double Fusing and Holder
PC = Polycarbonate Diffuser
PENDC = Pendant with Aircraft Cable Suspension⁴
PEND-ST = Pendant with Stem
—Specify Overall Height (OH)
—Specify Canopy: Static (STC) / Swivel (SWC)
TP = Tamperproof Screws

LED DIMMING OPTIONS

BL1 = Bi-Level Light (High/Low)
—Single AC Input Feed, with Switch Sensor (Required)
BL2 = Bi-Level Light (High/Low)
—Wired for Dual AC Input Feeds
CN = Color Tuneable LED - Consult Factory
D7 = 0-10V low-voltage LED Dimming
100-30% Std, Consult Factory for Other
D8 = LED Dimming: Forward Phase/Leading Edge (Triac)
- Consult Factory
D9 = LED Reverse Phase/Trailing Edge ELV
- Consult Factory
D11 = DALI LED Dimming Driver - Consult Factory
D12 = Lutron Dimming Driver - Consult Factory
MSI1 = Motion Sensor Integral⁵ (Microwave)
—Single Circuit: OFF / ALL-ON
MSI2 = Motion Sensor Integral⁵ (Microwave)
—Single Circuit: HALF-ON / ALL-ON

EMERGENCY BATTERY OPTIONS^{3,5}

No onsite Emergency Power (AC or DC) is provided
Specify Fixture Voltage: 120V or 277V Power Feed
A=120V or B=277V

Meets California Energy Commission Title 20:
(CEC-400-2014-009-CMF) Efficiency Standards

REL4W = Remote LED 4 Watt
REL8W = Remote LED 8 Watt
REL16W = Remote LED 16 Watt
EL16W = Integral LED 16 Watt

Cold Weather Emergency Batteries:

Operating Temp: -20°C thru 50°C
NON-CEC Compliant
REL10W-CW = Remote LED 10 Watt (Cold Weather)
REL23W-CW = Remote LED 23 Watt (Cold Weather)

NOTES:

- Consult Factory with requests regarding lamp sources, wattages or voltages not shown.
- Consult Factory for additional Emergency Battery options not shown.
- Aircraft cable for Pendant Mount available up to 10'. Specify Length.
- Max WHIP length with the REL provided by the factory is 8 feet.
- Due to form and fit, final selection of the Battery Pack under discretion of Factory

FULL SPECTRUM OPTIONS

Color Tunable White

1650K

LTM⁶ = LINEAR TUNABLE MODULE

- araya⁵ Full Color Adjustability
- Color Tunable White (1650-8000K)
- Integrated Bluetooth / 0-10V

Optional Additional Controls with LTM

DMX = DMX512-A-RDM Accessory Board
DALI = DALI Accessory Board
DLM = Digital Light Management
—Accessory Board by Legrand/Wattstopper
LTRN = Lutron EcoSystem Accessory Board

CLICK Click for Additional Information

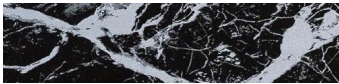


araya[®] & Blanco are registered trademarks of Lumenetix

RGB Spectrum

8000K

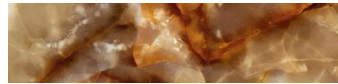
GRAVURA GRAPHICS FINISHES



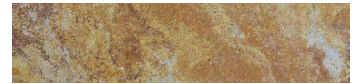
White Vein (WVN)



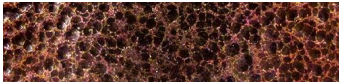
White Gold Vein (WGV)



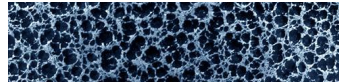
Gold Marble (GMB)



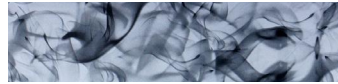
Travertine (TVT)



Copper Hybrid (CHB)



Silver Hybrid (SHB)



Silver Blue Smoke (SBS)



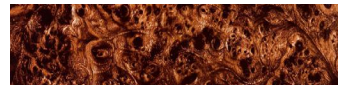
Silver Flames (SFL)



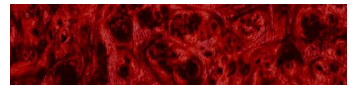
Orange Camo Vista (OCV)



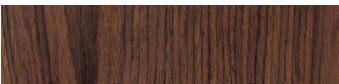
Red Camo Vista (RCV)



Tan Burlwood (TBW)



Red Burlwood (RBW)



Walnut Grain (WNT)



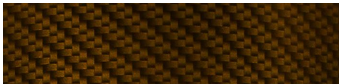
Tan Oak Wood (TOW)



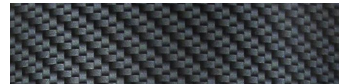
Maple with Gloss Finish (MPL)



Light Oak Wood (LOW)



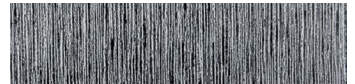
Gold Carbon Fiber (GCF)



Black Carbon Fiber (BCF)



Silver Carbon Fiber (SCF)



Stainless Steel (SST)



Handbrushed Swirl (HBS)



Grey Diamond Plate (GDP)



Handbrushed Aluminum (HBA)



Pink Swirl (PSW)