

Bollard Series - Square

Area/Parking/Industrial

LED LAMPING

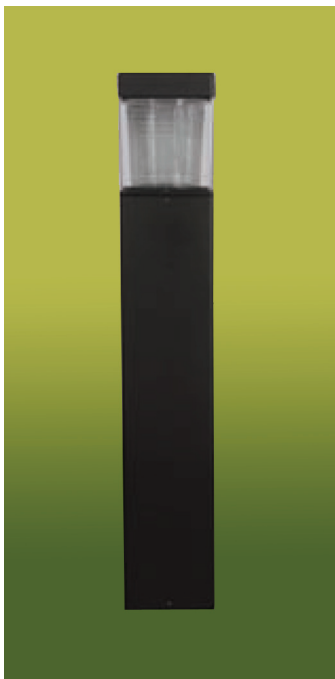
360° Low-Level Lighting

We reserve the right to revise the design or components of any product without notice.

CATALOG #		TYPE
PROJECT/LOCATION		
APPROVED BY		

SPECIFICATIONS

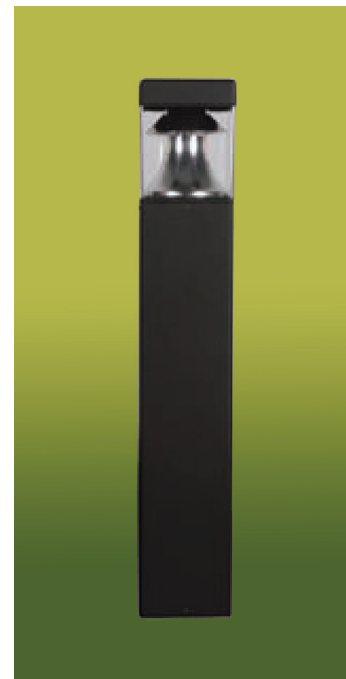
- HOUSING — Extruded Aluminum with Flush Mounting Base and Vandal-Resistant Screws. Flat Top. Style B: Type 5 Clear Prismatic Borosilicate Glass; Style C: Stamped Square Aluminum Louver; Style D: Aluminum Cone Reflector.
- FINISH — Powdercoat Finish Over a Chromate Conversion Coating. Bronze Finish (BZ) is Standard, Black (BK) or White (WH) Optional.
- LENS — Clear Polycarbonate
- DRIVER — Constant Current (700ma for 15W, 1400ma for 25W)
- LAMP — 15 or 25 Watt Super Bright-White LED.
- MOUNTING — Flush Mounting Base, Vandal-Resistant Screws, Mounting Kit with 4" anchor bolts.
- UL/ULC Listed to U.S. and Canadian safety standards - Suitable for wet locations.



STYLE B: TYPE 5 GLASS



STYLE C: LOUVER



STYLE D: CONE REFLECTOR

ORDERING GUIDE:

SERIES	STYLE	SIZE	LAMP TYPE/QTY/WATT	COLOR TEMP	VOLTAGE/POWER	FINISH	OPTIONS

NOTES:

- Consult Factory with requests regarding lamp sources, including LED, color temp., wattages or voltages not shown.

SERIES

BO-SQ = Square Bollard SERIES

STYLE

- B** = Style B: Type 5 Glass
- C** = Style C: Louver
- D** = Style D: Cone Reflector

SIZE

- M** = 7" sq x 31" Tall
- L** = 7" sq x 43-3/8" Tall

LAMP TYPE/WATTAGE

- LED15** = 15 Watt LED Board
- LED25** = 25 Watt LED Board

LED COLOR TEMP

- 3K** = ±3000K range
- 5K** = ±5000K range

PRIMARY VOLTAGE

EBU = Universal Volt (120~277V)

FINISH

- BK** = Black Finish
- BZ** = Bronze Finish - Standard
- CC** = Custom Color Finish (Consult Factory)
- WH** = White Finish

OPTIONS

- BAN8** = Mounting Kit: Bracket, (3) 8" Anchor Bolts
- BAN12** = Mounting Kit: Bracket, (3) 12" Anchor Bolts
- BAN15** = Mounting Kit: Bracket, (3) 15" Anchor Bolts
- BL** = Dual Circuit for High/Low Light Level
- SG** = 10KA Surge Protection for LED fixtures (meets ANSI spec C62.41.2)