

Monica

ARCHITECTURAL WALL PACK FAMILY

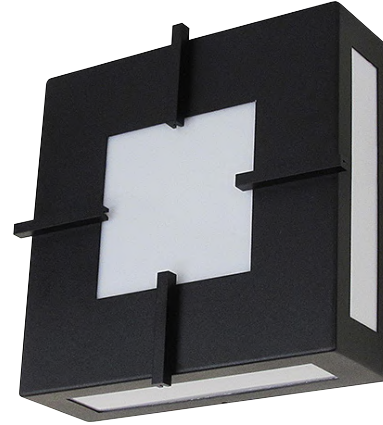
Indoor/Outdoor LED Wall Sconce

We reserve the right to revise the design or components of any product without notice.

CATALOG #		TYPE
PROJECT/LOCATION		
APPROVED BY		

SPECIFICATIONS

- DRIVER — Universal Voltage 120/277v Electronic Driver with 0-10V dimming.
- EMERGENCY — Optional Remote Emergency Battery.
- FASTENERS — Stainless steel tamperproof screws—(2) To secure lens in place.
- FINISH — Corrosion and Weather resistant pre-treated durable polyester powder coated.
- GASKETING — High temperature, non-aging black EPDM and/or neoprene rubber around the entire lens perimeter and rear wire entrance hole to protect against dust, moisture and outside contaminants.
- HOUSING — 16 Gauge Aluminum (AL). Housing Finish with Side Light is Standard.
- LIGHT ENGINE — Energy Efficient Light Emitting Diode.
- MOUNTING — Center access hole for indoor mounting to a "J" box or use (4) 5/16" dia. holes for 1/4" diameter bolts for outdoor or indoor for some models.
- WINDOW (FRONT) — White Translucent Opal Acrylic Lens, Square Opening (SQ1) is Standard. Consult Factory to "Design your own Fascia". Additional colored lens and other lens options are available.
- WINDOWS (SIDE) — White Translucent Opal Acrylic is standard. Additional colored lens and other lens options are available.
- COMPLIANCE — Build to comply to U.S. and Canadian safety standards. Made in USA, complies with Buy American Act (BAA), and is suitable for wet locations.
- WARRANTY — 5-Year Limited Warranty.



ORDERING INFO

	Series	Front Window	Wattage	CCT	Voltage	Finish	Side Window Option	Options
ORDERING GUIDE:								

SERIES

MC = Monica Series

FRONT WINDOW DESIGN

SQ1 = Single Square White Opal Acrylic Lens — Standard
CR = Custom Requirement (Design Own Fascia)

Front Window Options

FR-ACI = Front Window - Amber Color Insert

FR-CPR = Front Window - Clear Prismatic Acrylic Lens

LED WATTAGE

LED25 = 25 Watt LED

LED40 = 40 Watt LED

LED COLOR TEMPERATURE (CCT)

3K = \pm 3000K range LED

4K = \pm 4000K range LED

5K = \pm 5000K range LED

VOLTAGE

UNV = Universal Volt (120-277v) Electronic Driver

STANDARD FINISH

BK = Black Finish

BZ = Bronze Finish

PNA = Painted Natural Aluminum

SGR = Silver Gray

WH = Textured White Finish

PREMIUM UPCHARGE FINISH

CC = Custom Color (Visit www.ralcolor.com)

— Provide RAL# or Make-to-Match Color Chip

SIDE WINDOW OPTIONS

DK = Dark Sky (Top/Sides are Opaque, Bottom Light Only)

SD-ACI = Side Windows - Amber Color Inserts

SD-CPR = Side Windows - Clear Prismatic Acrylic Lens

SD-OPL = Side Windows - Translucent Opal Acrylic Lens

CONTROL OPTIONS (Choose from Manual or Sensor)

MANUAL CONTROL (Wall Switch or Control System)

Note: Cannot be used with Sensor Controls below

Note: 0-10V (100-30%) Dimming is Standard

D7A = 0-10VDC LED Dimming Driver (100-10%)

D7B = 0-10VDC LED Dimming Driver (100-1%)

OR

Sensor Control (Sensor Integral to Fixture)

Note: Cannot be used with Manual Controls above

OCC = Occupancy Sensing | Motion Sensor Integral²⁰

— Microwave / Single Feed / 120/277V Only

— Standby Dim Level Presets: ON/OFF (0%/100%)

BLD = Bi-Level Dimming | Motion Sensor Integral²⁰

— Microwave / Single Feed / 120/277V Only

— Standby Dim Level Presets:

10% / 20% / 30% (Standard) / 50%

MISC OPTIONS

FUS = Single Fusing

EMERGENCY BATTERY OPTIONS²⁰

Meets California Energy Commission Title 20:
(CEC-400-2014-009-CMF) Efficiency Standards

REL4W = Remote LED 4 Watt²⁰

REL8W = Remote LED 8 Watt²⁰

ACCESSORY OPTIONS (order as a separate line)

9002 = Tamperproof Screwdriver

REMT = Remote Controller for Sensor Options

NOTES:

²⁰ Max mounting height of fixture is 18' (18 feet)

²⁰ Max WHIP length of the REL is 8 feet.

Monica
ARCHITECTURAL WALL PACK FAMILY
Indoor/Outdoor LED Wall Sconce

We reserve the right to revise the design or components of any product without notice.

CATALOG #		TYPE
PROJECT/LOCATION		
APPROVED BY		

DIMENSIONS

Technical drawings of the Monica wall sconce. The front view shows a square unit with a central square cutout, with dimensions of 15" width and 15" height. The side view shows the depth of the unit, with a width of 4-1/2" and a height of 15".

FRONT / SIDE WINDOW OPTIONS

3D rendering of the Monica wall sconce with amber color inserts. The front window and side windows are shown with a warm, yellowish-orange glow.

Front Window - Amber Color Insert (FR-ACI)
Side Windows - Amber Color Inserts (SD-ACI)

3D rendering of the Monica wall sconce with clear prismatic acrylic lenses. The front window and side windows are shown with a clear, textured appearance.

Front Window - Clear Prismatic Acrylic Lens (FR-CPR)
Side Windows - Clear Prismatic Acrylic Lens (SD-CPR)

3D rendering of the Monica wall sconce in Dark Sky (DK) mode. The top and sides are opaque, and the bottom is shown with a light output.

Dark Sky (DK)
Top and Sides are Opaque with No Light Output
Bottom Light Only

ECLIPSE™
LIGHTING

2925 Lucy Lane | Franklin Park, IL 60131
P: 847-260-0336 | F:847-260-0344 | E: quotes@eclipselightinginc.com | W: eclipselightinginc.com

© 2024 Eclipse Lighting Inc.
Eclipse Lighting pg.2
Rev. 12/4/2024