

Troy-E

Cylinder Family - Medium Base Sockets

Wall Mount / Ceiling Mount / Pendant Mount

Outdoor / Indoor Applications

We reserve the right to revise the design or components of any product without notice.

CATALOG #		TYPE
PROJECT/LOCATION		
APPROVED BY		

SPECIFICATIONS

- HOUSING — Heavy gauge aluminum cylinder.
- FINISH — Powder Coat Finish applied over pre-treated surfaces.
- LAMP SOCKETS — Medium Base Sockets (E26) - Lamps by Others.
10" Tall is Downlight Only. Max Lamp size is PAR30 (BR30, PAR30L, PAR38 are Not Compatible).
- LENS — Top (1/8" Clear Tempered Lens) / Bottom is Open (No Lens).
- MOUNTING — Wall Arm Mount, Surface Ceiling Mount, Pendant Mount, Pendant Aircraft Cable.
- REFLECTOR — .032 Specular Aluminum Standard.
- VOLTAGE — 120 Volt.
- COMPLIANCE — Built to comply with U.S. and Canadian Safety Standards. **Made in USA / Buy America Compliant / Buy American Act.**



Wall Mount
(WM)



Pendant Aircraft Cable
(PEND-ACR)



Pendant Stem Mount
(PEND)



ORDERING INFO

Series	Size	Mounting	Lamping	Voltage	Finish	Options

ORDERING GUIDE:

SERIES

TY-E = Troy-E Series

SIZE

10 = 10" Tall (7" dia.) - Down Light ONLY

16 = 16 1/2" Tall (7" dia.)

20 = 20" Tall (7" dia.)

26 = 26" Tall (7" dia.)

MOUNTING

CM = Surface Ceiling Mount - Down Light Only

PEND = Pendant Mount (24" Stem)

— For Custom Stem Specify Length

— Includes Canopy Swivel Kit (45°)

PEND-ACR = Pendant Mount - Aircraft Cable

WM = Wall Mount

— Includes 3" Arm for 10" and 16" Sizes

— Includes 6" Arm for 20" and 26" Sizes

LAMPING

(1)MBS = One Medium Base Socket (E26) - Lamps by OTHERS

— For Single Light Output (Downlight)

— Compatible: A19 / PAR20 / PAR30 / Smart Bulb

— NON-Compatible: BR30 / PAR30L / PAR38

(2)MBS = Two Medium Base Sockets (E26) - Lamps by OTHERS

— For Dual Light Output (Uplight and Downlight)

— Compatible: A19 / PAR20 / PAR30 / Smart Bulb

— NON-Compatible: BR30 / PAR30L / PAR38

VOLTAGE

120V = 120 Volt

STANDARD FINISH

BK = Black

BZ = Bronze

PNA = Painted Natural Aluminum

WH = White

PREMIUM UPCHARGE FINISH

CC = Custom Color (Visit www.ralcolor.com)

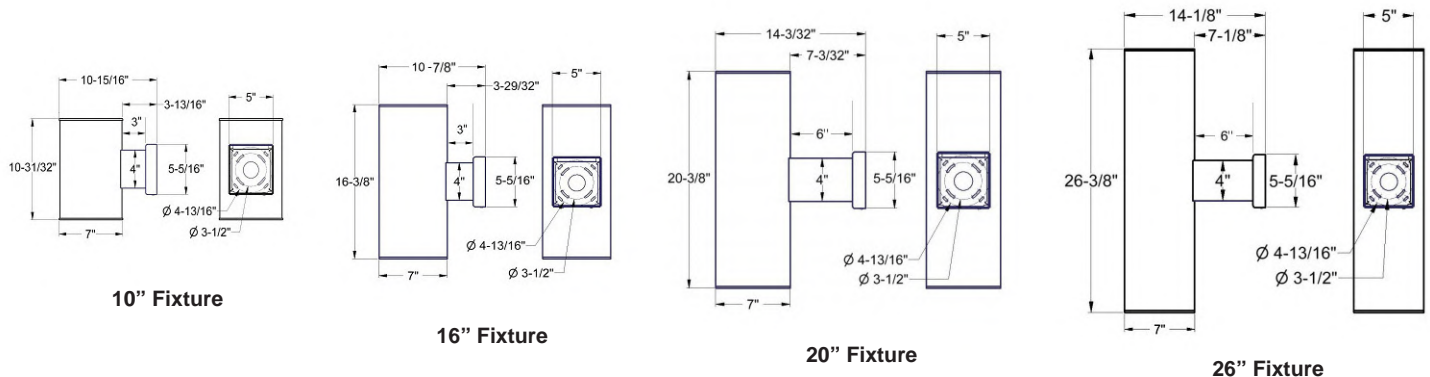
— Provide RAL# or Make-to-Match Color Chip

OPTIONS

OTB = Open Top / Bottom (Indoor Only)

— Wall Mount or Pendant Aircraft Cable Only

DIMENSIONS



Troy-E

Cylinder Family - Medium Base Sockets
Wall Mount / Ceiling Mount / Pendant Mount
Outdoor / Indoor Applications

We reserve the right to revise the design or components of any product without notice.

CATALOG #		TYPE
PROJECT/LOCATION		
APPROVED BY		

LAMPING COMPATIBILITY _____



A19



A19 Smart Bulb

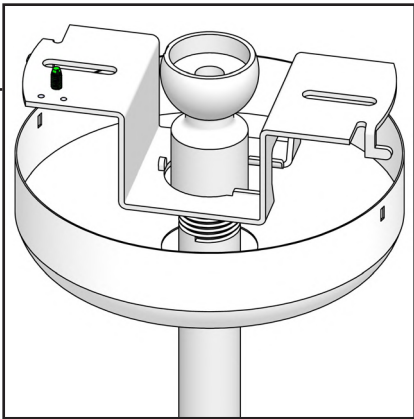


PAR20



PAR30

PENDANT CANOPY SWIVEL KIT _____



Pendant Mount Includes
Canopy Swivel Kit