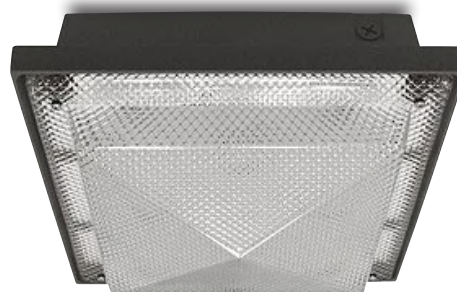


Quest 5

BASIC VANDAL RESISTANT Shallow Drop Pyramid Luminaire Indoor/Outdoor Wet Location

SPECIFICATIONS

- DRIVER — Universal Voltage 120/277 Electronic Driver with 0-10V dimming is standard.
- EMERGENCY — Remote or Integral Emergency LED Battery.
- GASKETING — High temperature, non-aging black EPDM and/or neoprene rubber around entire lens perimeter and rear wire entrance hole to protect against dust, moisture, and outside contaminants.
- HOUSING — Heavy wall cast aluminum with wire access on four sides and back through threaded 1/2" conduit size entrance holes—finished in bronze oven baked polyester powder coat.
- LIGHT ENGINE — Energy Efficient Light Emitting Diode (LED).
- LENS — Injection molded 1/8" thick (nom.) clear prismatic polycarbonate completely enclosed fixture—Drop Pyramid is Standard.
- LENS FASTENERS — Stainless steel tamperproof screws (4) to secure lens in place.
- MOUNTING — 4-Point Mount: (4) 5/16" Diameter Holes For 1/4" Diameter Bolts. Optional Quick Mount Bracket.
- REFLECTOR — .032 textured aluminum for high efficiency and to reduce arc tube voltage rise for lamp life.
- COMPLIANCE — Built to comply with U.S. and Canadian Safety Standards. Suitable for Wet Locations. **Made in USA / Buy America Compliant / Buy American Act.**



We reserve the right to revise the design or components of any product without notice.

CATALOG #		TYPE
PROJECT/LOCATION		
APPROVED BY		

ORDERING INFO

	Series	Wattage	CCT	Voltage	Finish	Options
ORDERING GUIDE:						

SERIES

QE5 = Quest 5 Series

WATTAGE

LED40 = 40 Watt LED (4000 Initial Lumens)
LED60 = 60 Watt LED (5800 Initial Lumens)²

COLOR TEMPERATURE (CCT)

3K = ±3000K range
35K = ±3500K range
4K = ±4000K range
5K = ±5000K range

VOLTAGE

347 = 347 Volts
UNV = Universal Volt (120-277v) Electronic Driver

STANDARD FINISH

BK = Black Finish
BZ = Bronze Finish – Standard
PNA = Painted Natural Aluminum
WH = White Finish

PREMIUM UPCHARGE FINISH

CC = Custom Color (Visit www.ralcolor.com)
+NAT = Epoxy Coating for Natatorium
+OFC = Epoxy Coating for Ocean Front Environments

MOUNTING OPTIONS

QM = Quick Mount Bracket
SR = Semi-Recessed Adapter

PHOTOCELL OPTION

9328 = Photocell Button (120/277V)²

CONTROL OPTIONS (Choose from Manual or Sensor)

MANUAL CONTROL (Wall Switch or Control System)

Note: Cannot be used with Sensor Controls below

Note: 0-10V (100-30%) Dimming is Standard

D7A = 0-10VDC LED Dimming Driver (100-10%)

D7B = 0-10VDC LED Dimming Driver (100-1%)

BLS = Bi-Level Switching - Using 2 Drivers (2UNV)²

OR

Sensor Control (Sensor Integral to Fixture)

Note: Cannot be used with Manual Controls above

Note: See Accessory Options for Required Remote Controller

OCC = Occupancy Sensing | Motion Sensor Integral²⁰

— Microwave / Single Feed / 120/277V Only
— Standby Dim Level Presets: ON/OFF (0%/100%)

BLD = Bi-Level Dimming | Motion Sensor Integral²⁰

— Microwave / Single Feed / 120/277V Only
— Standby Dim Level Presets:
10% / 20% / 30% (Standard) / 50%

BLDA = Bi-Level Dimming | Motion Sensor Integral²⁰

— Ambient Light Sensing Feature
— Microwave / Single Feed / 120/277V Only
— Standby Dim Level Presets:
10% / 20% / 30% (Standard) / 50%
— Bi-Level Control Initiated at Ambient Light Level Preset

MISC. OPTIONS

BB = Back Box (required where note² shown)

FUS = Single Fusing

DFUS = Double Fusing

EMERGENCY BATTERY OPTIONS^{20 50}

Meets California Energy Commission Title 20:

(CEC-400-2014-009-CMF) Efficiency Standards

EL4W = Integral LED 4 Watt²

EL8W = Integral LED 8 Watt²

EL10W = Integral LED 10 Watt²

EL16W = Integral LED 16 Watt²

REL4W = Remote LED 4 Watt

REL8W = Remote LED 8 Watt

REL10W = Remote LED 10 Watt

REL16W = Remote LED 16 Watt

Cold Weather Emergency Batteries:

Operating Temp: -20°C thru 50°C / NON-CEC Compliant

EL10W-CW = Integral LED 10 Watt (Cold Weather)²

REL10W-CW = Remote LED 10 Watt (Cold Weather)

ACCESSORY OPTIONS (order as a separate line)

9002 = Tamperproof Screwdriver

REMT0009 = Remote Controller for Sensor Options

NOTES:

² Backbox (BB) Required.

²⁰ Max mounting height of fixture is 18' (18 feet)

⁵⁰ Max WHIP length of the REL is 8 feet.

⁵⁵ Final selection of the Battery Pack under discretion of Factory

Quest 5

BASIC VANDAL RESISTANT

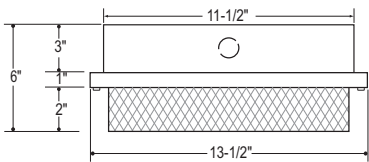
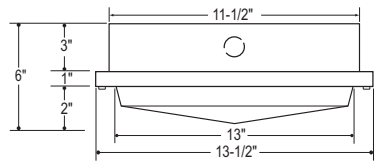
Shallow Drop Pyramid Luminaire

Indoor/Outdoor Wet Location

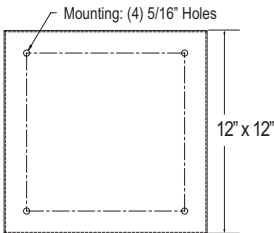
We reserve the right to revise the design or components of any product without notice.

CATALOG #		TYPE
PROJECT/LOCATION		
APPROVED BY		

DIMENSIONS



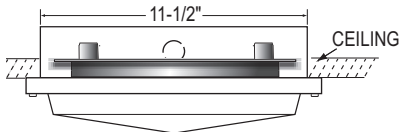
Drop Square - Optional



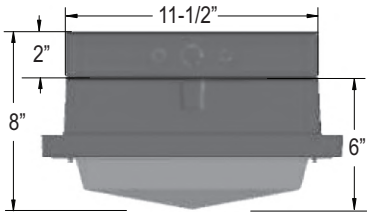
OPTIONS



Quick Mount Bracket (QM)



Semi-Recessed Adapter (SR)



Shown with Back Box (BB)
Required for Integral Battery Backup and
LED60w

PHOTOMETRIC DATA

Summary of Results QE5-LED40-3K-UNV-DS					
Lumen Output	Efficacy	Input Power	CCT	Distribution	BUG Rating
4,279.9 Lumens	109.7 Lm/W	39.0W	3000K	Type VS	B2-U3-G1

LCS Summary	
Zone	Lumens
Forward Low (0-30)	529.2
Forward Medium (30-60)	1004.9
Forward High (60-80)	470.4
Forward Very High (80-90)	92.3
Back Low (0-30)	529.2
Back Medium (30-60)	1004.9
Back High (60-80)	470.4
Back Very High (80-90)	92.3
Up Low (90-100)	54.7
Up High (100-180)	31.6

